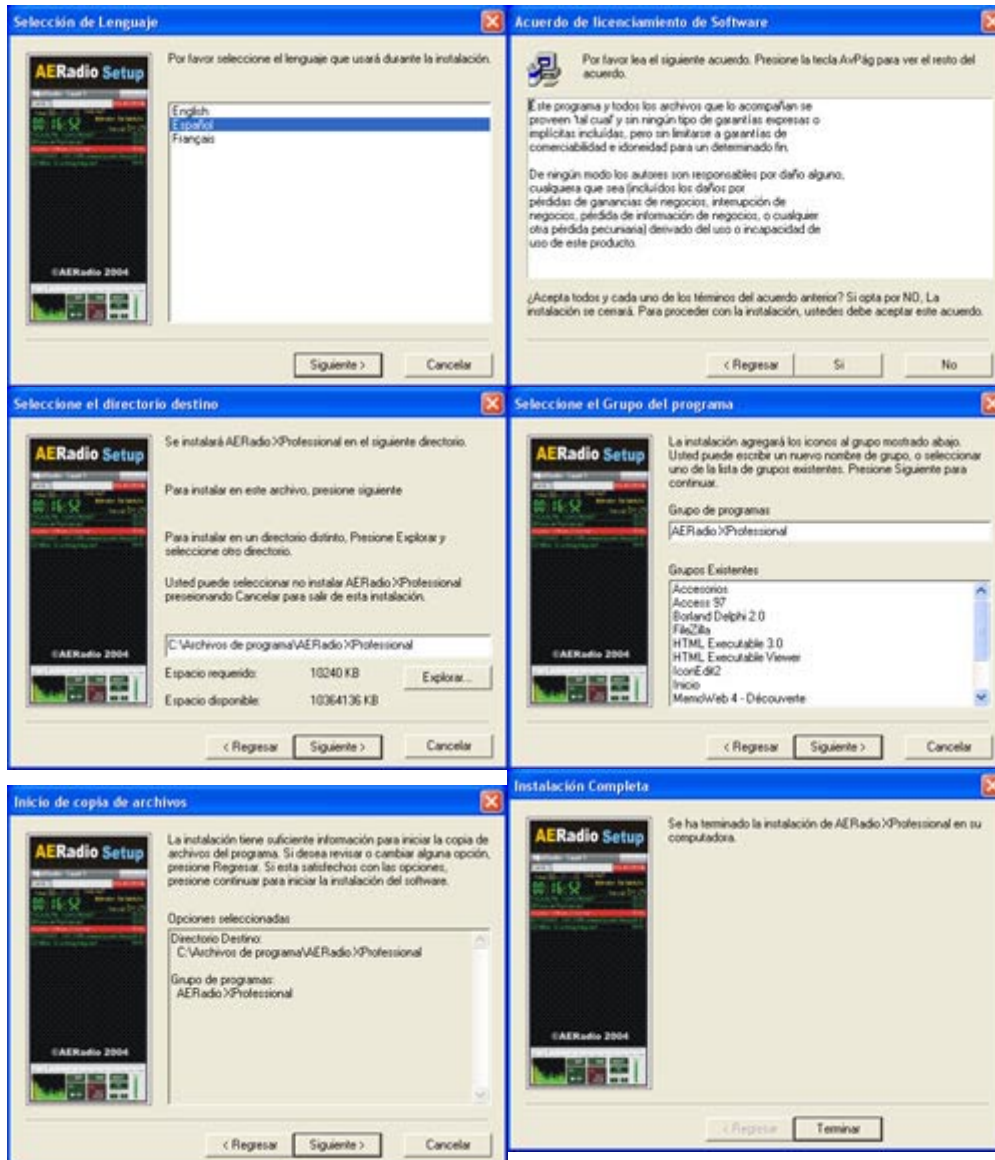




Basic Operation Manual.

This one is manual basic of operation directed to evaluate the product. The most important aspects are commented but not the totality of the options that the package of AERadio has.

Installation.



After installing the demo.

When starting AERadio in anyone of its versions can you see a series of floating windows allocated better or worse depending on the resolution of screen of your machine.

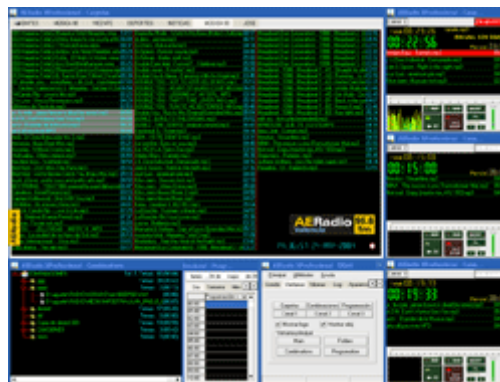
The image 'No Registrado' or 'Unregistered' you can move to be able to operate with demo of the program. The other limitation is the maximum of 5 songs in each one of the playlists.



The logo appearing 'AERadio Valencia 96.6' or 'Su LOGO' **can be the logo of your radio station** . With the registered version the procedure is explained to make that your logo appears with the purpose of personalizing the program.

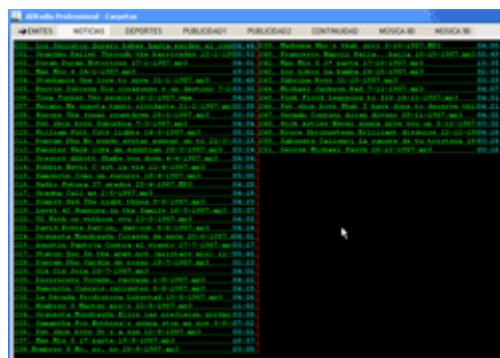


You can fit the size of the rest of windows until getting an aspect similar to the one of the inferior image. The clock/calendar also is considered as a floating window (that appears in screen).



Sections of AERadio.

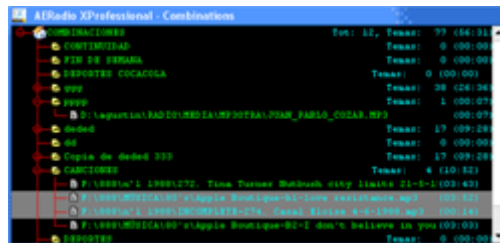
The main window is the one of the left superior part and usually shows the total of musical songs, jingles, publicity, etc.



In the right, the playlists appear, is the place where we will drag the sound files for its later emission.

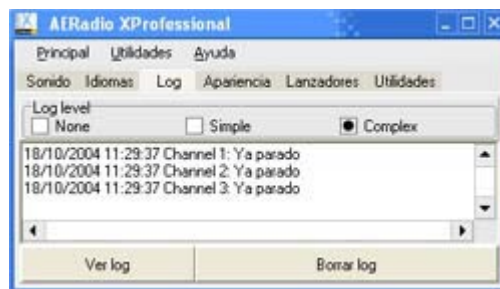


And finally, and in the inferior part it the window Continuity or Combinations next to the Control Panel of the named 'Main'.



Main. Control Panel.

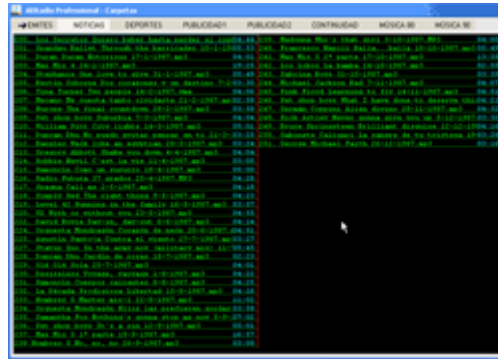
The Control Panel is the place where we can form different aspects from the application and make differents things, for example: that more or less playlists are showed, the logo of the radio station, the clock, etc.



You can also select the options to silence channels, general volume, the language of the interface, to visualize log, to change to the appearance selecting others skins, to modify the source of the text, and even to launch other applications. (this last one is not qualified in the Demos).

Folders.

By defect in the demo a series of sound files of sample appear in the window of 'Folders'



The first step that we would have to give is the one of being able to assign to an folder a disc directory that contains sound files: For it, pressing the right button of the mouse on some folder already created, we will choose the 'New-Folder' option and we will directly write the folder's name.

Now the last step to make is to assign a disc directory to that folder. For that we will select directory 'Insert-Folder'. Repeating the operation we can assign more than one disc directory to a folder.

The folder 'EMITES' is directed to lodge the indicatives or jingles of the radio station, being the first of them assigned to system SOS that we will comment more ahead.

All these steps let us obtain that in each folder they appear certain songs, jingles, advertisements, with the purpose of having a total organization of our files organized by folders.

Basic Handling.

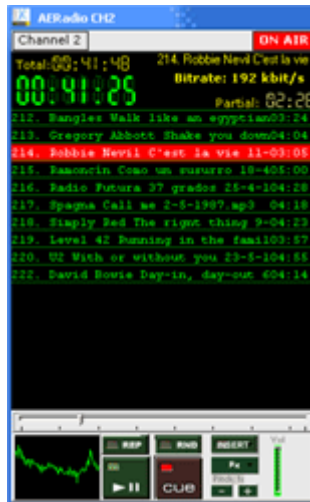
Emiting audio files is has simple as pressing on them and dragging them the playlist 1 2 or 3. To emit them definitively we must make a pulsation in the Play button.

Groups of files can be selected with the mouse and with of key CTRL or SHIFT. (the version demo will only let reproduce the 5 first deposited in the list).

Playlists.

The song in reproduction can be stopped and pass to the following one with Button NEXT. Also the change of order of the subjects of the list works moving them with the mouse.

The button + and - apply a Pitch to the song in reproduction, the Fx button adds effects On Line to the songs and the buttons REP and RND would make the function of repeating the songs of the list and doing it in random order when finalizing.



Also some radio stations wish to put jingles or indicatives between all the songs in order to get that the emission is not boring. To get it we have button INSERT: When pressing it, we will be able to select how we want that it inserts jingle that will take randomly or not of the folder 'Emites' of the window Folders.

A denominated application COMBINATOR is included in the XProfessional version in order to be able to remotely modify the combinations from another equipment of local network or Internet. It is the solution for not interfering the work of the announcer having to go to the equipment of emissions.

Automatic Programming.

This module is including only in the version XProfessional of AERadio, and it is the module that allow to make a complete programme planning of your radio station, programming the publicity, music, jingles, etc, for emissions programmed for long time. For example for month, weeks, etc.

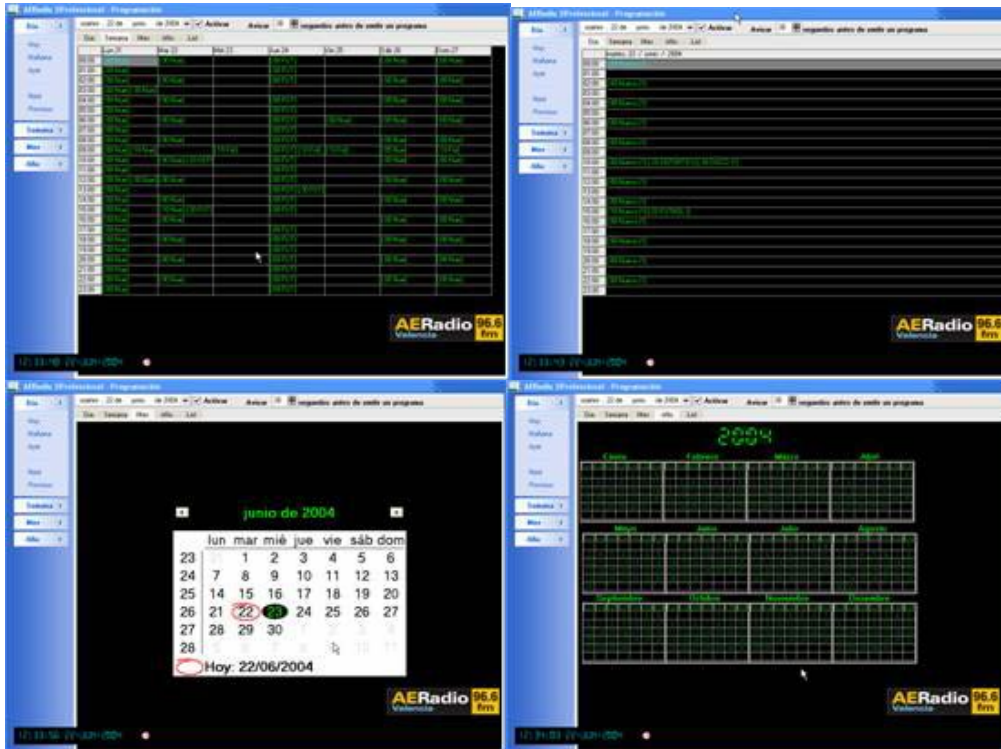
The user can create so many programs as he wishes. The program will be sent in the date and to the hour that it is specified. For that reason, the person in charge of the programming of the radio station can leave programmed all the emission for a long space of time, including music, indicatives or jingles, and of course the publicity to emit.

It is the module that is used by many of our clients, for example to maintain closed the radio station during periods of vacations, month of August, etc.

The method to make an automatic programme planning is the following one:

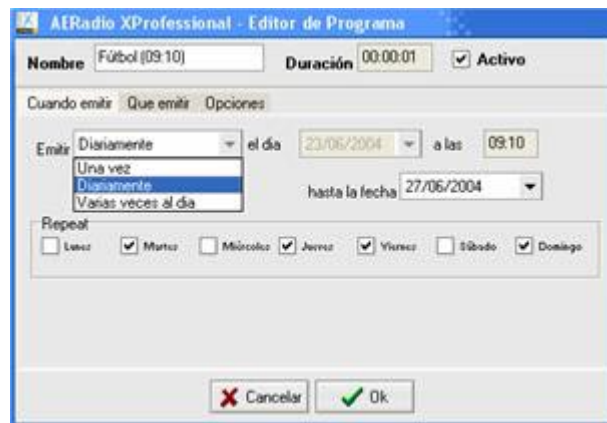
Firstly, we must know clearly the idea that a program can contain individual files or combinations of files previously created that will be emitted in the date and to the hour that we determine.

The interface of the programming module is similar to a 'planning' and has different kinds of visualization (daily, weekly, monthly, annual and playlist format) to facilitate the location of the day in which we want to insert the program.



More detail:

You must select the day in which the program will be emitted. Next the hour of emission is selected and it appears the window of selection of the Minute. This window allows to select the minute of emission, and would allow to insert more programs within the same hour interval, that is to say a program in the minute 10 and another one in the minute 22 for example.



Once added the program we can accede to a screen where we will select what must be emitted one is due to emit. (songs, advertisement, indicatives or Combinations with these elements).



As you can appraise in the image we have three different folders that mark the three steps to follow to generate the program:

1. When emit . We can select if we want that the program emits a single time (normally), daily (with possibility of selecting the days of the week in which it will be emitted, and until what date) and Several times the day (that will allow to select how often the program will be repeated too).

2. What emit. Where we will select the sound files to emit or, as normally it is made, the combinations that contain all the songs as well, advertisements, etc.

3. Options. We will select if the program will have to be emitted to the exact hour or no, allowing that finishes the song that is sounding or interrupting it directly. It is allowed to select the channel where the program will be emitted.

It is necessary to consider that we can have activated or deactivated the programs to emit of individual or general form. That is to say, that we will even have an option that will deactivate all the programs automatically, or simply a certain program.



AERadio will warn in advance of the automatic emission of a program through an emergent window to warn the announcer that AERadio is going to take the control of the emission.

Of course the edition or modification of a program, its delete, the total erase of the programs are allowed, as well as the delete of the old programs already emitted.

With the different kinds of visualization we will have therefore a grill with the detailed programme planning and in graphics mode.

Example of a joint use of the module of programming with the one of Combinations.

We are going to plan an assumption in which the power of the module of programming next to the one of combinations is appraised:

Let us imagine that we want that our computer automatically emits a combination composed by 200 songs (previously we will have made the combination with those 200 subjects), that will be repeated during the month of August, but in random order in each repetition. Of that way the listener will not always listen to the songs in the same order nor to the same hour.

When placing the combination in the reproduction list we will also cause that it automatically inserts jingles or indicatives of our radio station each X songs randomly.

Now, the last thing to get is that the programming module emits the blocks of publicity to its determined hours. So, we will make so many programs as we need to put the day and the hour of emission. Also we can indicate if we want that the programs are emitted to one exact hour, if they let finish the present song or no, etc.

In conclusion, we can create a combination with all the music of the month, with our automatic jingles, and the publicity with the form of programs with date and hour. We have been able to make the programme planning for all the month of August.